

# British Standard Fuse links

An Introduction to Cooper Bussmann British  
Standard Fuse links



**COOPER** Bussmann

# British Standard fuses

## BS Standard covers;

- Dimensions
- Watts Loss
- Time-Current Characteristics
- Breaking Capacity (**80KA**)
- Three types **BS88 industrial**, **BS1361 Domestic** and **BS1362 Plug fuse**

# BS88 Industrial fuses types

**BS88 Covers many fuse requirements**

**Including,**

**General requirements**



**Industrial fuses**

**Semiconductor fuses (covered in next session)**



**Electricity supply network fuses (Feeder Pillar fuses)**



# **BS88 Industrial fuses**

**The main product range in the UK is BS88 fuses.**

**Established by GEC in 1940**

**Old but well established range**

**Reliable circuit protection**

# BS88 Industrial fuses

## Cylindrical Ceramic Bodies



## Press fit end caps



## Granular high grade Sand filled



## *M-effect* element



# BS88 Voltage range

**Three major voltage levels available**

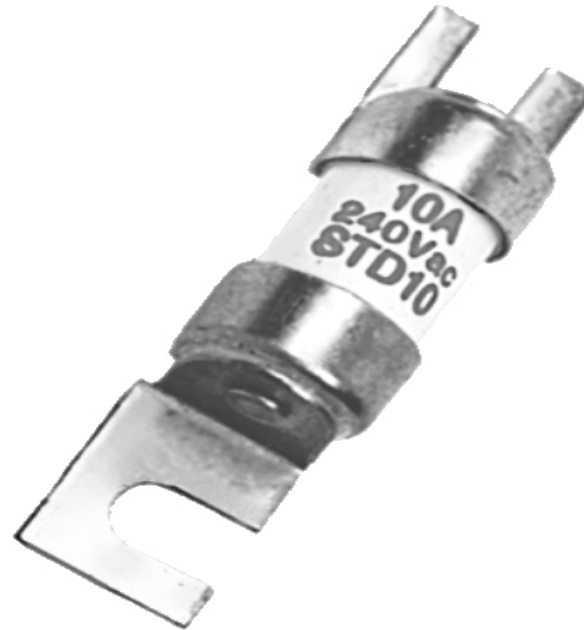
**240V**, used for street lighting applications

**415/550V**, used for the majority of industrial applications

**660/690V** used on large industrial sites where a higher voltage is required for long cable runs

# BS88 240V Street Lighting range

Parts numbers are SMD and STD



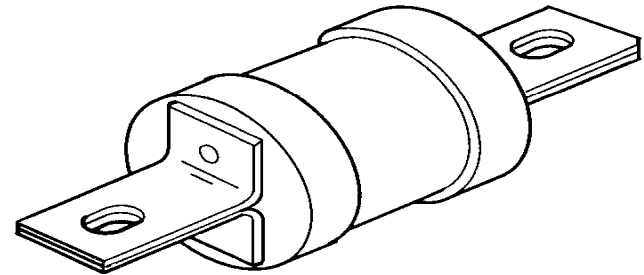
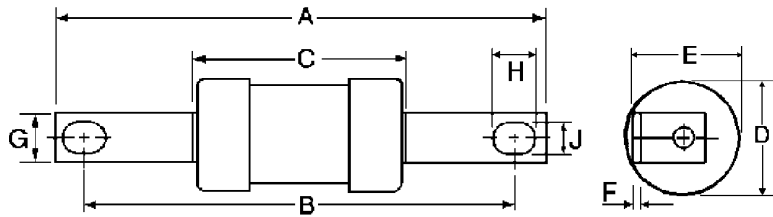
# BS88 Industrial 415/550V

Typical part numbers AA032, BA063 etc  
Ratings from 2A to 1250A



# BS88 Bolted tag variants

## Offset bolted tag



## Centre Bolted tag

# BS88 Offset bladed tags

Part numbers NSD or ESD  
Ratings from 2A to 63A



# BS88 660/690V range

**660V fuse are only fuses suitable for use on 690V system**

**BS88 spec allows fuse tests at 660V +10%**

**IEC269 spec allows fuse test at 690V +5%**

# BS88 660/690V range

Typical part numbers are; 6H07-660,  
K07-660.

Dimensions similar to 415/550V  
versions.

Ratings from 2A to 500A



# Special Tag Variants

**Some None standard tag variants are manufactured for certain applications**



# BS88 DC fuses

**DC is much more difficult to use than AC**

**Special DC fuses from 10 to 63A are available**



# BS fuse characteristics

**BS fuses have three main fuse characteristics**

**gG/gL means general purpose fuse link  
(all fuses mentioned so far)**

**gM means special fuse for motor circuits**

**aR means high speed back up fuse for  
short circuit protection only.(shown in  
next session)**

# BS Motor fuses

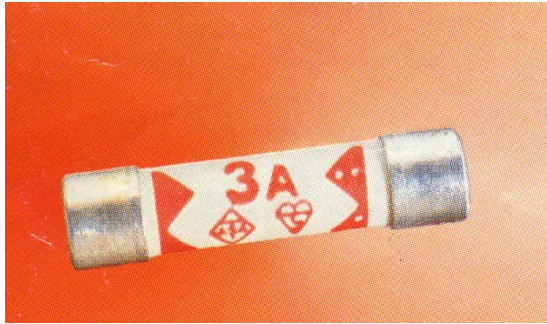
## Dual Current Rating

- **Thermal Current Rating (normal rating)**
- **Rating for Characteristics (Starting current)**

## Part Numbers

- **Reference + Thermal Rating + M +  
Characteristic Rating**  
**EF400M500,      NSD32M50**

## Domestic Plug fuse is BS1362



- Ratings from 1A to 13A
- 240V Rating
- 6KA Breaking capacity

# Other British Standard fuses

**House service and consumer unit fuses are**

**BS1361**

**Ratings from 5A to 100A**

**415V rated**

**33KA Breaking capacity**



# BS Fuse Holders

**For ratings from 2A to 100A Cooper Bussmann offer enclosed fuse holders known as CAMaster and Safeloc fuse holders.**

**Directly compete with GEC Red Spot fuse holders  
Superior design**

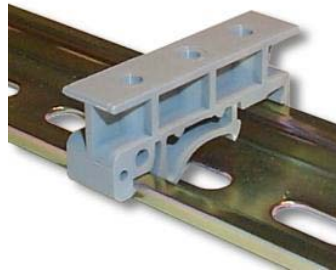
# BS Fuse Holders

## Camaster fuse Holders

Unique Cam action for easy fuse insertion, removal.

High temperature, light weight strong thermo plastic casing.

Din rail, flat panel or bus bar mounting options.



# Camaster Fuse holder

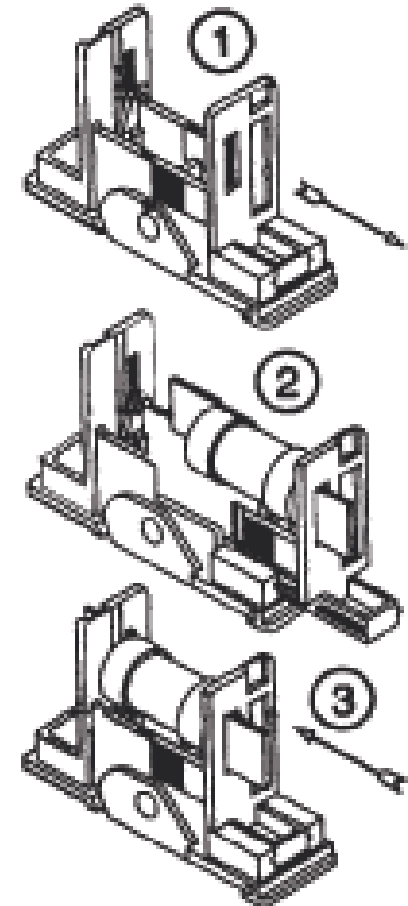


# Safeloc fuse holders

**Compact design**

**No tools required for insertion or removal of fuses.**

**DIN rail, flat panel or bus bar mountable.**



# Summary

**Cooper Bussmann are the leaders in  
British Standard product.**

**Wide product range covers all  
applications**

**Good selection of fuse holders for  
complete circuit protection solutions**

**Over 50,000 products in Bussmann range**

**Any questions??**